



**sikla**

**CAPABILITY STATEMENT**

# **SMP Support Integration**



Trading since 1967, Sikla has been specialising in pipe and multi-service support solutions for capital projects. This includes the research and development of efficient structural installation systems, their alignment with specific industry requirements, compliance with international construction regulation and full Building Information Modelling integration (BIM).



Sikla Oceania operates from an office and workshop in Western Australia, both stocking key products and hosting pre-manufacturing facilities. Our design and field engineers are at hand to support your project. Working with Sikla means for your SMP execution:

- ✓ **No steel drilling**
- ✓ **No hot work**
- ✓ **Reduced self-weight at high load bearing**
- ✓ **Off-the-shelf availability**
- ✓ **Recyclable components & waste reduction**

# COMPANY OVERVIEW



## CAPABILITY

# Providing a turnkey solution from design to supply

By providing integrated solutions to our customers we are able to supply solutions for each client's individual needs.

From design through to supply our aim is to have a holistic approach within the project to ensure the best possible outcomes. The importance of planning is crucial for heavy industrial projects whereby engaging earlier in the timeline with Sikla allows risks to be identified that can benefit project costs and schedule.

To meet the demands of our customers we provide tailored solutions for design, procurement and logistics. We are able to leverage off both local and international Sikla teams and our network of solutions partners in order to keep on track.

Sikla's focus is providing the best possible outcomes for the project.







## DESIGN INTEGRATION

# Design solutions for individual needs

Our client's have individual needs and Sikla can tailor our support to suit. For those who don't require resourcing we can provide a suite of BIM integration and full load capacity data for design and modelling in house.

### Turnkey Solutions

From as early as FEED stage cost and schedule savings can be assessed to provide key stakeholders information in decision making.

Through our solution partners full design and construction modelling of our supports is supplied with seamless integration, reducing client engineer resource burden.

BIM deliverables allow tracking of material costs and scheduling making sure project timelines are adhered to.

### Empowerment

For those who have in house resourcing Sikla can supply a number of software and CAD integrations allowing engineering calculations and modelling to be produced.

Throughout the project Sikla can provide training and on site support ensuring materials are integrated into the project model without error.



# Deliverable on time and in budget

## Front End Design

Early engagement allows for better planning and taking full advantage of the Sikla benefits.

Based on broad FEED stage outputs Sikla is able to detail time and cost savings.

## BIM and Deliverables

In order to keep the project on track, models are supplied data rich giving our client's crucial information for project tracking.

## Software and Training

Support through the project lifespan from dedicated Project Managers to on-site training. Available at no costs:

- Software plugins
- CAD block
- Load Data sheets

## Detailed Design

Sikla is able to provide full design and construction modelling services, integrating into the clients model for both review and final IFC deliverables

## Construction Execution

Sikla frames can be provided fully pre-fabricated for final site fix. Off-site construction allows a safer and cleaner environment with the ability to make changes outside of the field reducing costs and impact to schedule.

Robust logistics mean that material is on site in the right place and at the right time.



# PROJECT MANAGEMENT



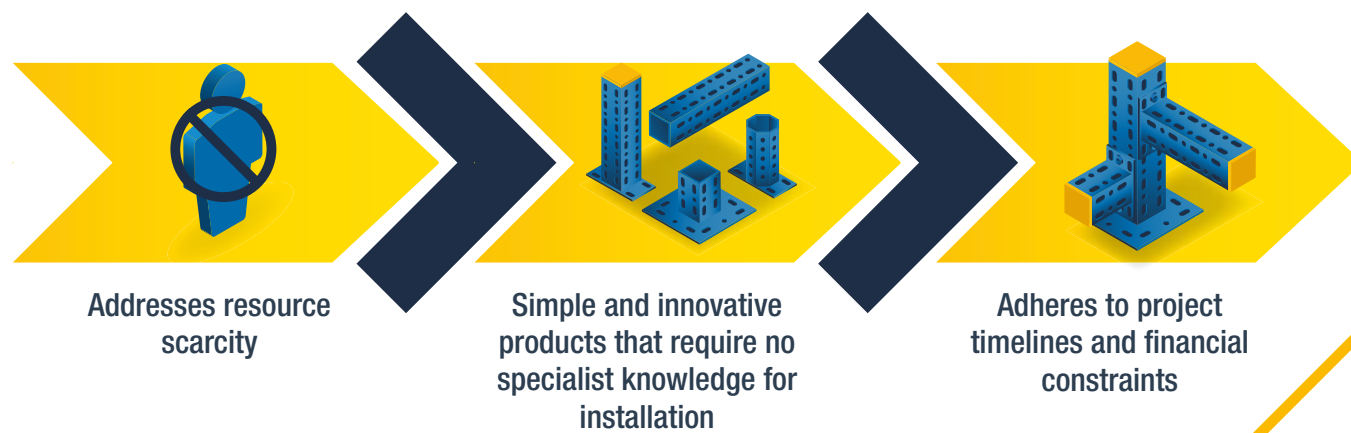
**Sikla advantage**

# Solving skill shortages

Today's construction projects face the issues of worker skills shortage and high on-site labour costs. The availability of resources causing schedules to slip and cost blow outs.

Sikla's innovative approach requires simple and common construction techniques without the need for specialists or trade qualified installers. Changes and amendments are easily achieved without hot works or compromising the integrity of primary steel structures and corrosion protection. Modifications are no longer expensive or time consuming.

The outcomes are delays and costs are reduced or eliminated with work being carried out inline with the project plan.







# Reduce on site labour costs and schedule impact

The key to a successful project is construction execution. Sikla is able to manage fabrication in its off site facilities providing the client with the most efficient delivery for the project. Logistics are tailored to the project considering area designation through to geographical location. Materials arrive not only on time but consolidated for the most efficient on site handling.

## Pre fabrication advantages :

- Reduced on site labour and resourcing
- Better integration of design through to installation phase. Frames can be assembled to suit site conditions for improved efficiency.
- Dedicated deliveries in line with project demarcation prevents material being in the wrong place. Errors and missing materials are greatly reduced.

# FABRICATION AND LOGISTICS



# RECENT PROJECTS



**2020**  
**Kwinana Waste to Energy (WtE) Plant, WA**  
**AUD \$1 000 000**  
**Acciona**

Australia's first Waste-to-Energy which will process approximately 400,000 tonnes of municipal and pre-sorted commercial/industrial waste producing 36MW of power to the grid. Sikla is providing design through to supply of prefabricated secondary pipe and electrical containment supports totalling approximately 65 tonnes and 3,000 individual supports.



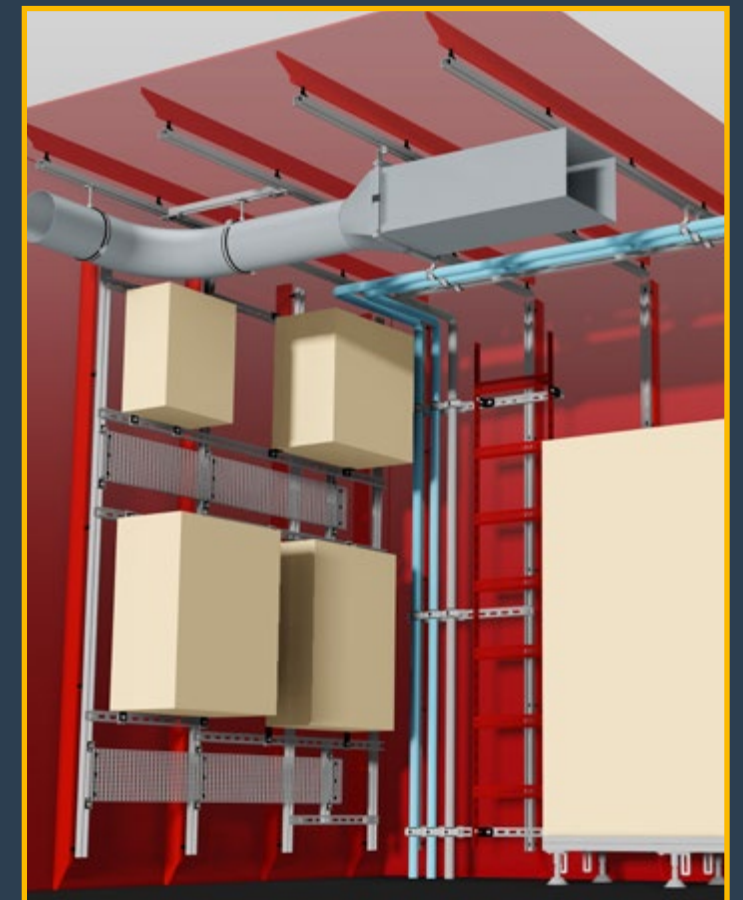
**2022/2023**  
**Mount Holland Lithium Project**  
**≈ \$6 500 000**  
**Covalent Lithium**

Construction of a new Lithium Refinery producing approximately 45,000 tonnes of battery quality hydroxide per year. Sikla was engaged early in the project timeline and provided design, supply and project management of secondary steel supports for piping and HV Cable ladder. The total quantity of supports supplied was ≈ 7000 prefabricated units and the total tonnage approximately 300 tonnes. Integration of Sikla supports allowed timely release of primary steelwork packages and integration of normally costly downstream changes.



**2018 (ongoing)**  
**SEA1180 Offshore Patrol Vessel (OPV)**  
**Programme**  
**AUD \$2 000 000**  
**Lürssen Australia/Civmec Construction**

New offshore vessel program replacing Armidale and Cape class Patrol boats. Sikla is supplying the first fix grid system and primary supports of services throughout vessel superstructure. Within the scope materials are mobilised from factories across the globe and centralised logistics and account management are conducted at Sikla's Canning Vale facility. The current program is for 6 vessels with the first 2 built in Osbourne SA, and the remaining vessels in Henderson WA.







**Peter Walkden**

**Managing Director**

Peter has been with SIKLA Oceania since its foundation in 2017, overseeing projects ranging from Waste-to-Energy, Lithium Refining and Shipbuilding. He became director of Oceania in 2021 and reports directly to our group headquarters.



**Maja McInnes**

**Replenishment Manager**

Maja has worked within the international SIKLA Group since 2016 and is highly experienced in supply chain management and international shipping. Maja focuses on ensuring adequate component availability by coordinating with Sikla's Head Office and OEM pool.



**sikla**

Sikla Oceania Pty Limited  
5 Craft Street  
Canning Vale | WA 6155  
Australia  
+66 (0) 8 9456 2777

canningvale@sikla.com.au  
sikla.com.au

